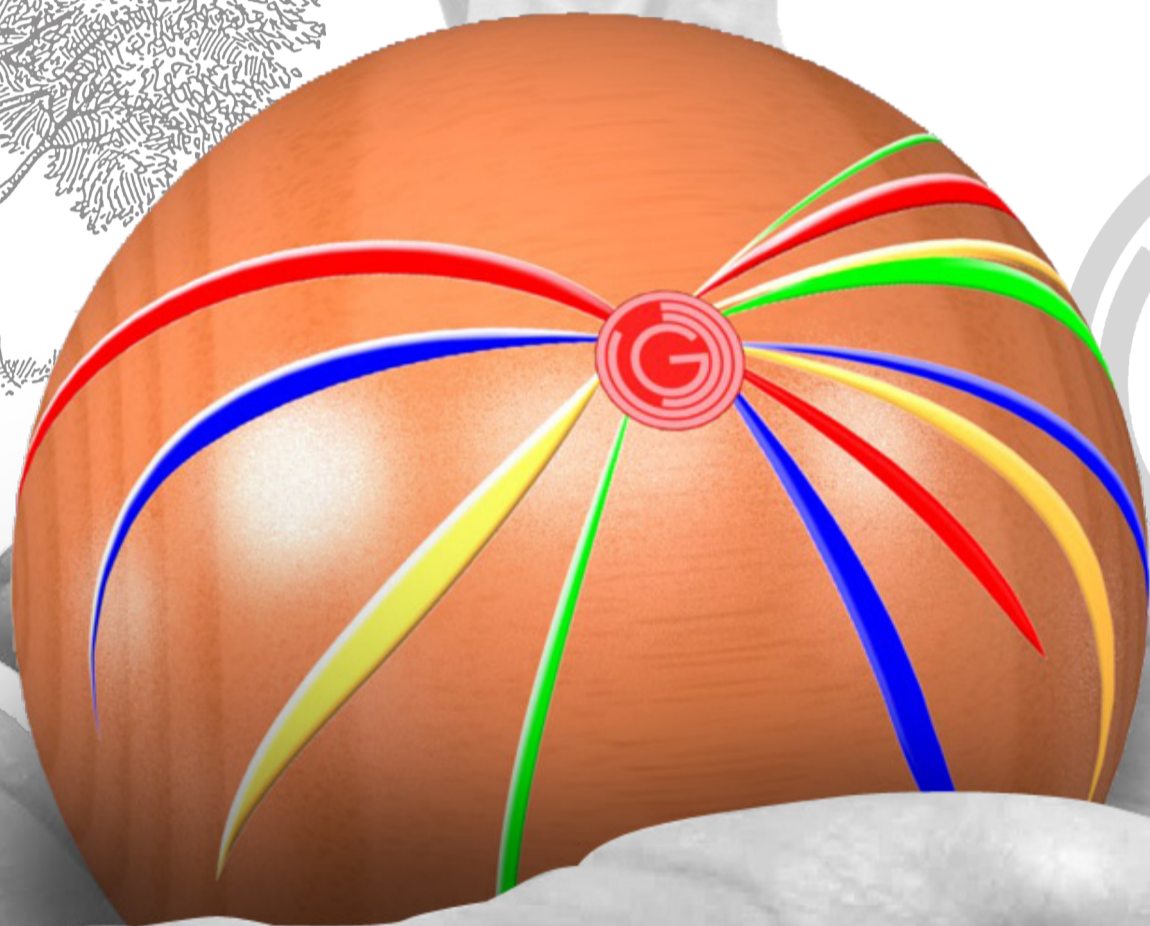
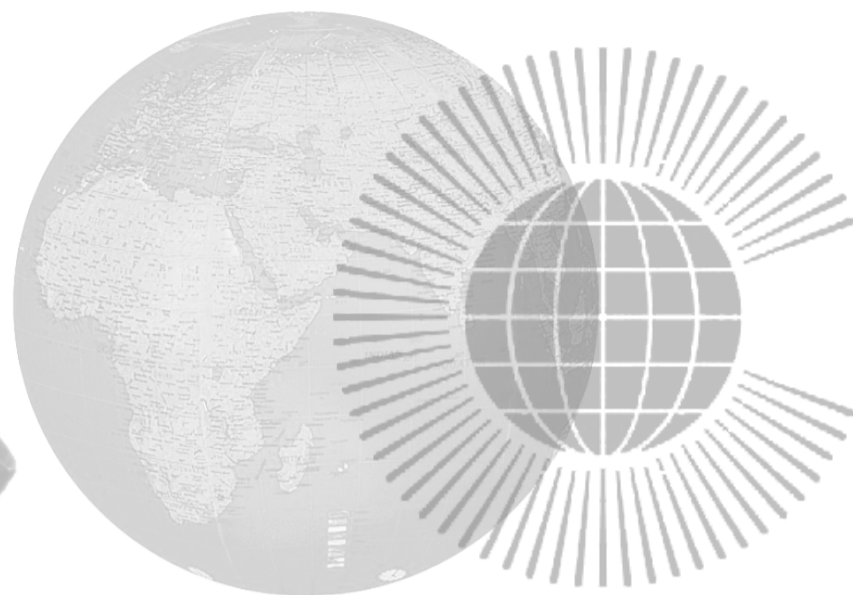
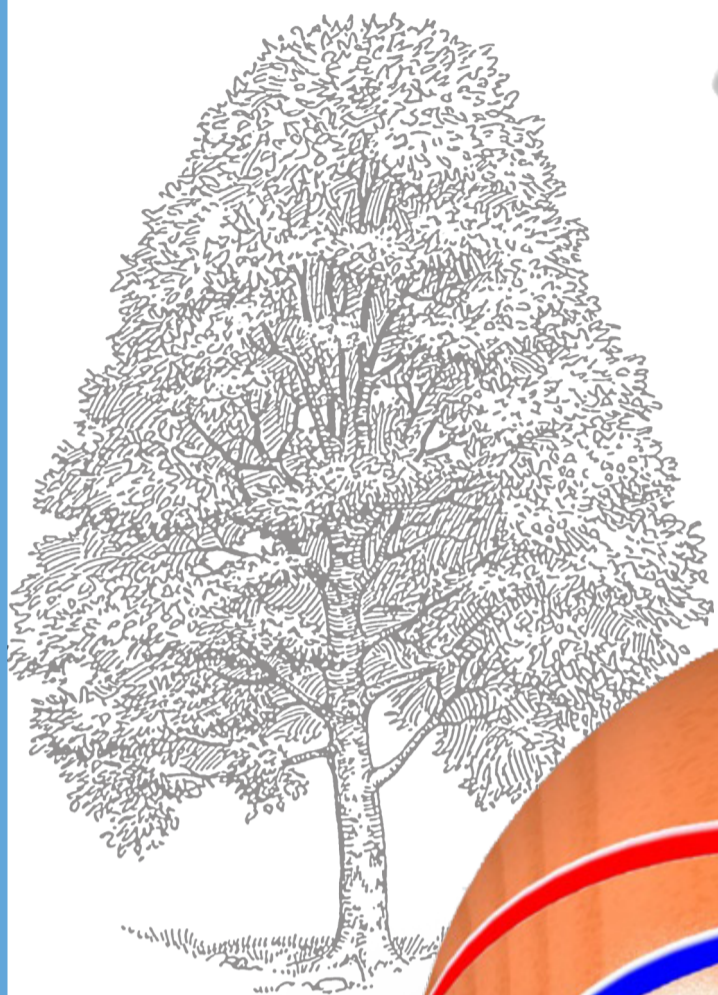


FRANCESCA STEPHENS

# QUEEN'S BATON

22/03/2013

PDE3 FINAL PRESENTATION



CLYDEPORT



FRANCESCA STEPHENS

# QUEEN'S BATON

22/03/2013

PDE3 FINAL PRESENTATION

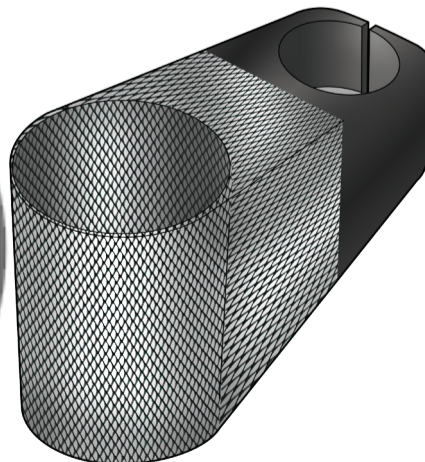
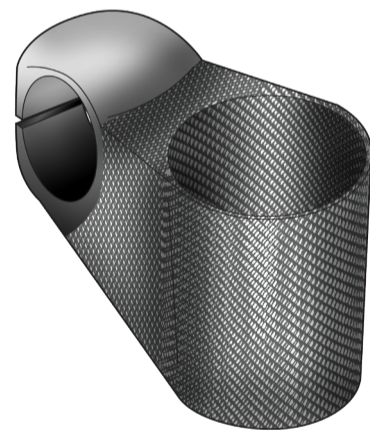
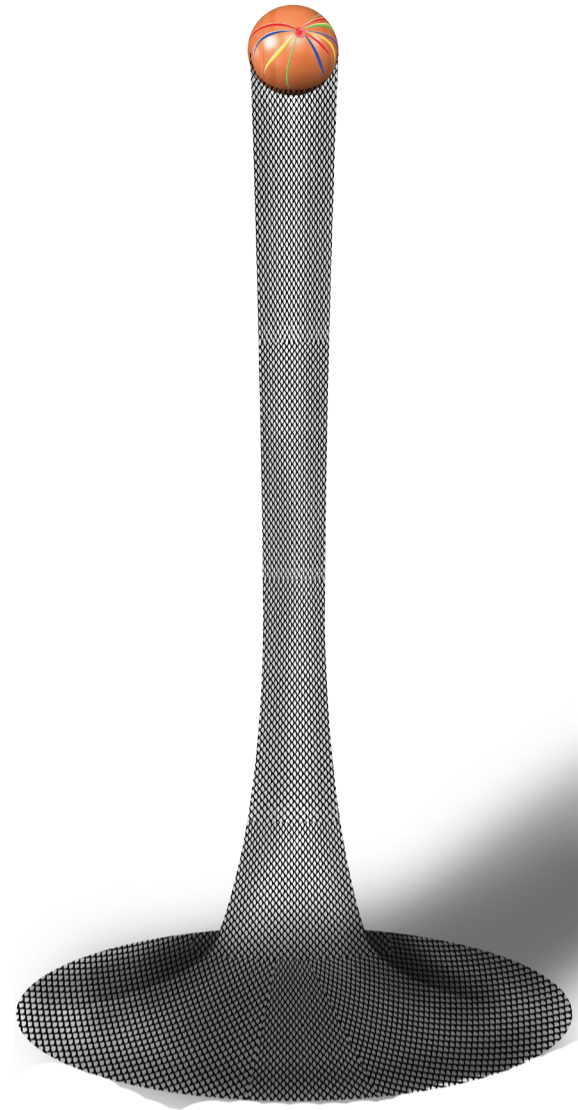
HOLDER



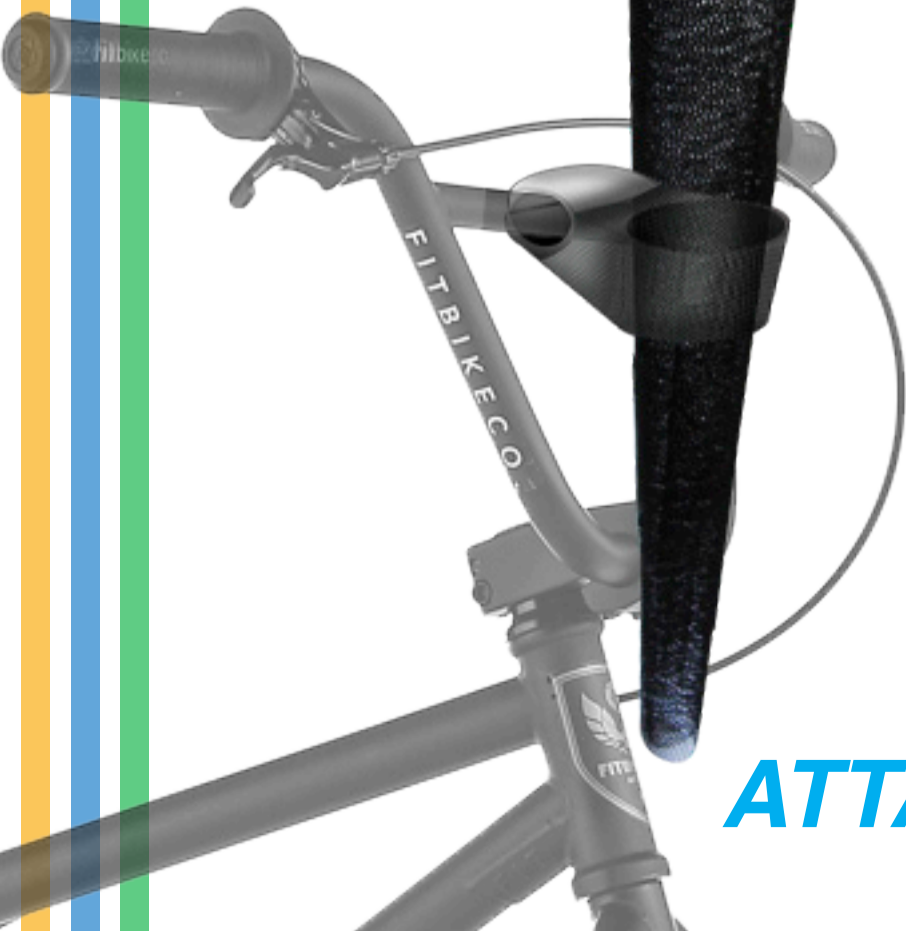
TABLE  
STAND



FLOOR STAND



ATTACHMENTS

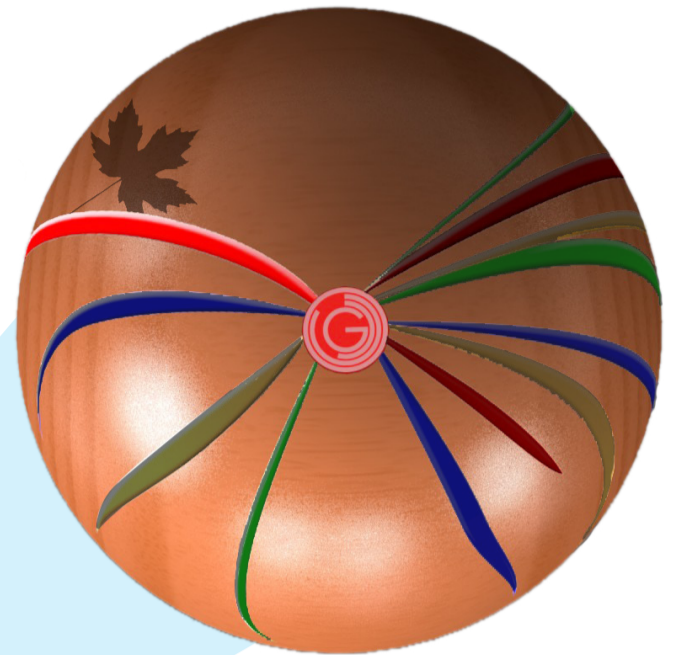
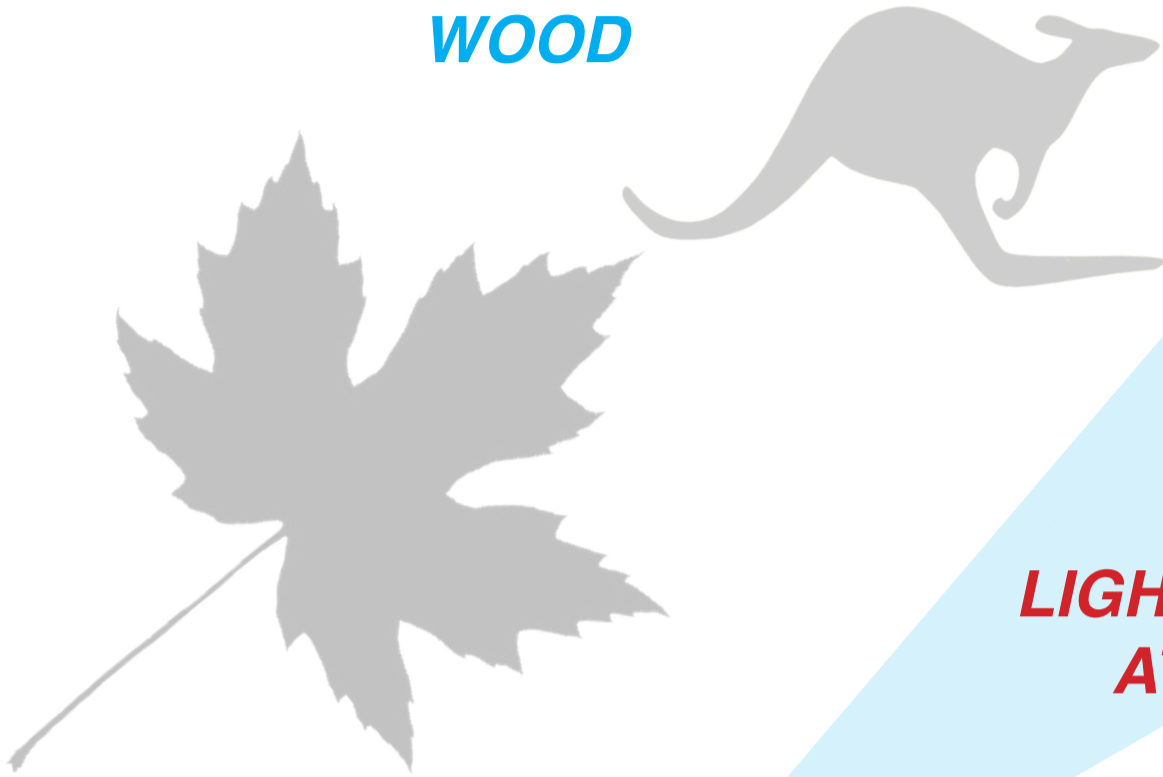


# QUEEN'S BATON

22/03/2013

PDE3 FINAL PRESENTATION

IMAGE OF COUNTRY'S  
CHOICE BURNT INTO  
WOOD



LIGHTS UP  
AT EACH COUNTRY /  
TERRITORY / REGION



WEB USERS  
CAN ACCESS AND  
TAKE A PHOTO AT  
KEY MOMENTS



# QUEEN'S BATON

22/03/2013

## Flourishing

*Will Require local craftsmen to source and carve wood*

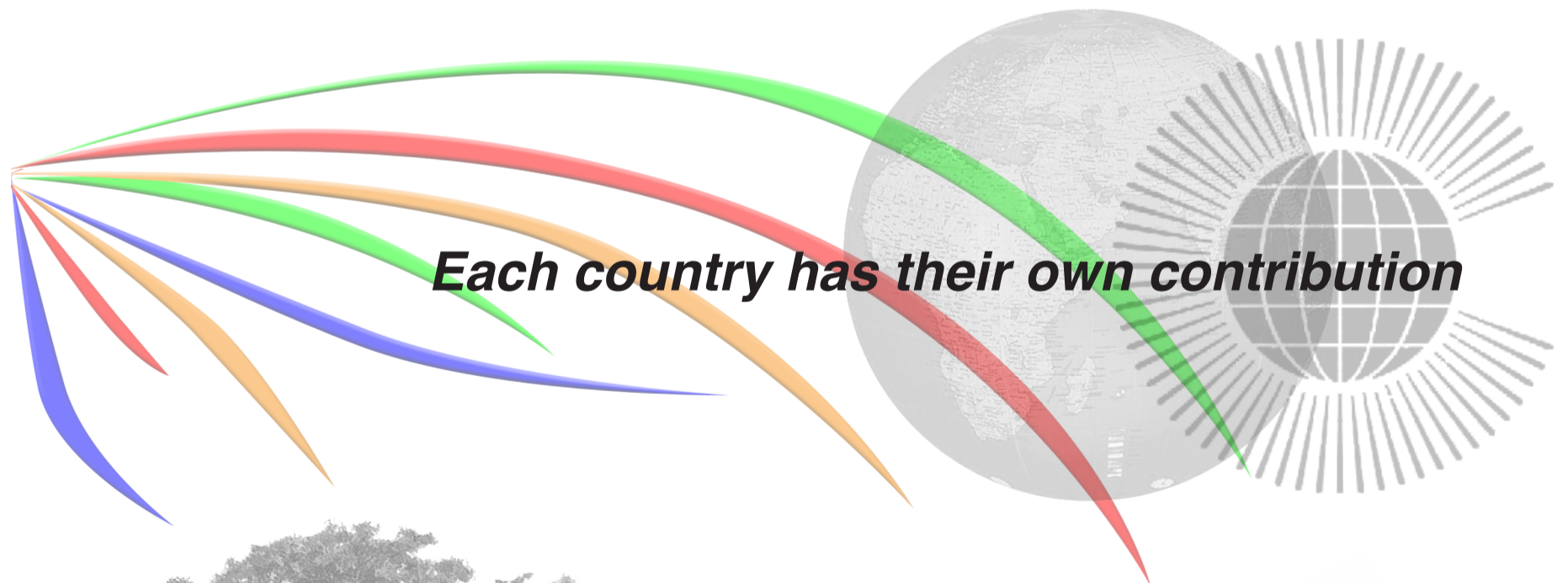


## Active

*People can throw and play with the ball*

## Connected

*Lights connect glasgow with the world*



*Each country has their own contribution*

## Sustainable

*Made from locally sourced wood and Recycled Aluminium*

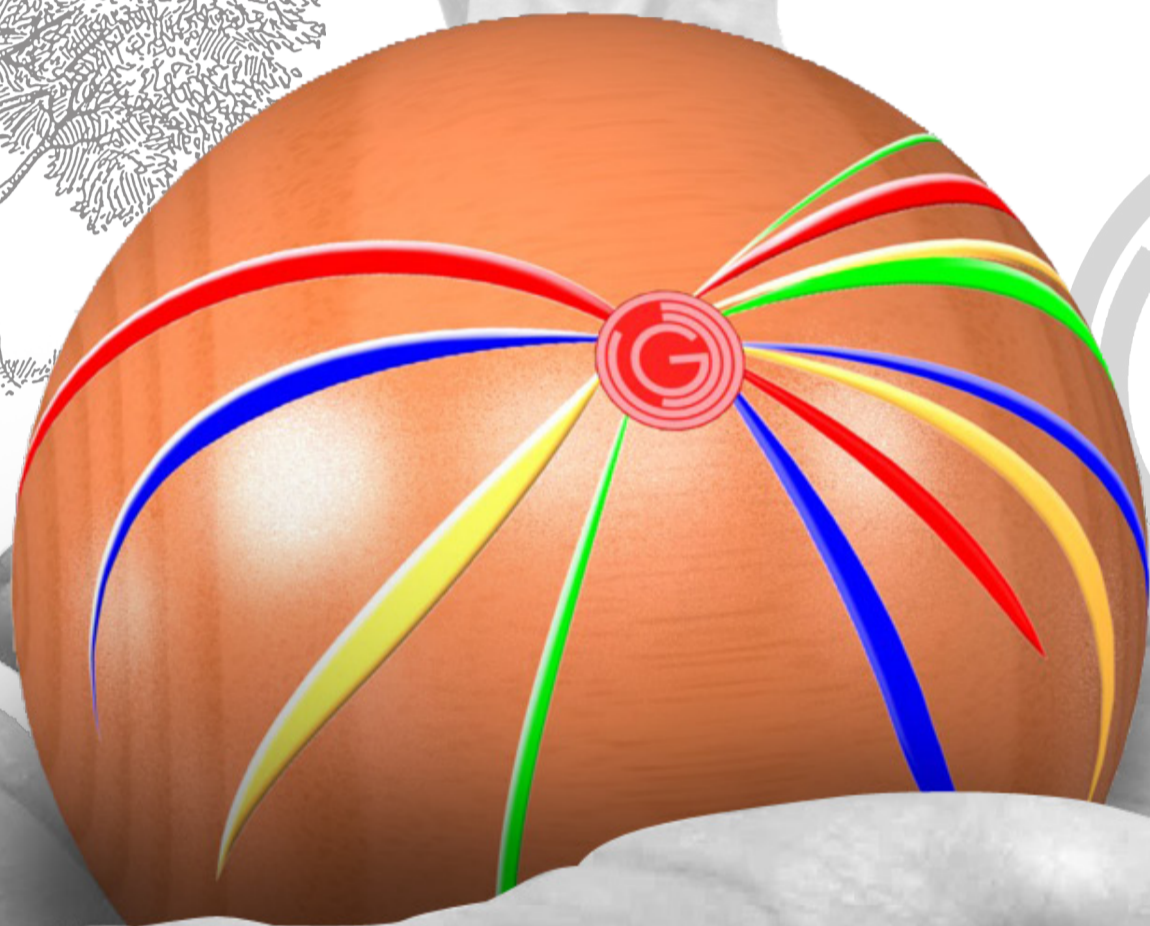
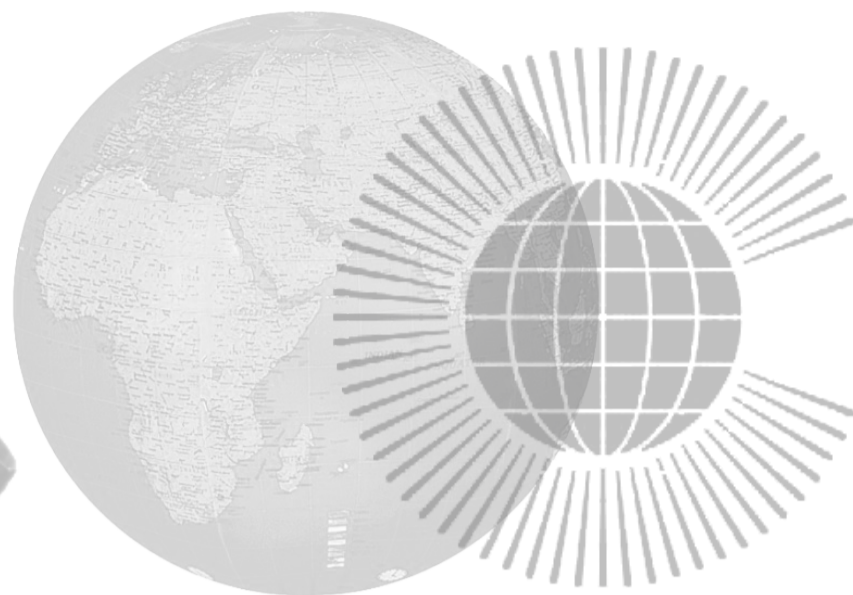
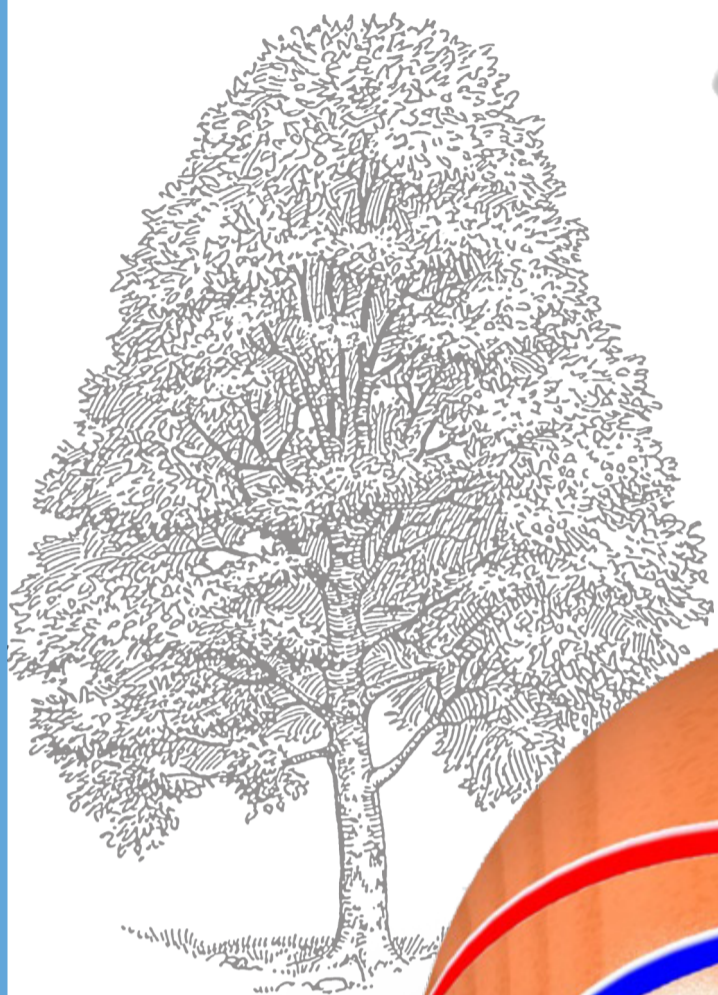


FRANCESCA STEPHENS

# QUEEN'S BATON

22/03/2013

PDE3 FINAL PRESENTATION



CLYDEPORT

